

State of Wyoming Corner Record

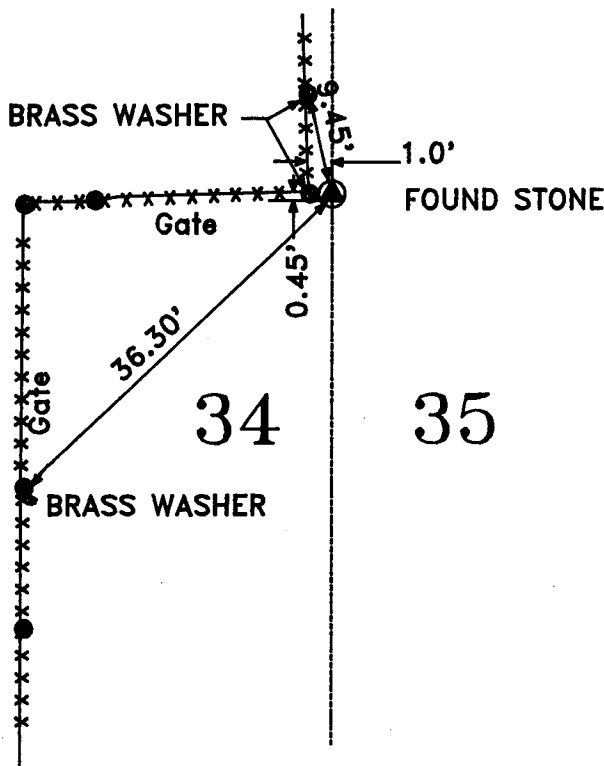
(In compliance with the CORNER PERPETUATION AND FILING ACT. Wyoming Statutes, 1977, Section 36~11~101, et seq., and the Rules and Regulations of the Board of Registration for Professional Engineers and Professional Land Surveyors)

The reverse side of this form may be used if more space is needed.

The Record of the original survey and the citation of the source of the historical information (if the corner is lost or obliterated). The description of the corner monumentation evidence as found and/or the monument and it's accessories as established to perpetuate the location of this corner. A sketch of the relative location of this Monument, accessories, and reference points with the course and distance to adjacent corner (s) (if determined during this Survey). The Method and Rationale used for the reestablishment of lost and obliterated corner.

G.L.O.: John B. Thomas deputy surveyor, under his contract No. 9 bearing date the 17th day of October 1870, commenced 24 May 1871, completed 30 May 1871.
 "From the corner on the South boundary of the Township common to Sections 2,3,34 & 35 (Variation 15°20'E). North between Sections 34 & 35 I run 40.00 chains Set granite boulder 13 1/4 10 1/2" for 1/4 Section Corner....".

Found Granite Boulder 12"X10"X5" with 1/4 inscribed on the East face, said stone was well set East of the fence corner post as shown hereon.



RECORDED 8/26/1999 AT 2:03 PM REC# 259180 BK# 1531 PG# 287
 DEBRA K. LATHROP, CLERK OF LARAMIE COUNTY, WY PAGE 1 OF 1

1/4



Date of Field Work: _____ Office Reference: _____

Cross Index Diagram

T. 16 N. R. 67 W. 6th P.M.

	1	2	3	4	5	6	7	8	9	10	11	12	13	14	15	16	17	18	19	20	21	22	23	24	25
A																									
B																									
C																									
D																									
E																									
F																									
G																									
H																									
J																									
K																									
L																									
M																									
N																									
O																									
P																									
Q																									
R																									
S																									
T																									
U																									
V																									
W																									
X																									
Y																									
Z																									

Firm/Agency, Address
 Terrestrial Surveying & Mapping Co.
 "Your Friendly Neighborhood Surveyor"
 1127 Terry Ranch Road
 Cheyenne, Wyoming 82007
 Telephone Number: (307) 634-9360

This Corner Record was prepared by me or under my direction and supervision.

SEAL & SIGNATURE



Corner Name: 1/4 Section: 34 | 35 T. 16 N. R. 67 W. 6th P.M. Cross Index No. X~17